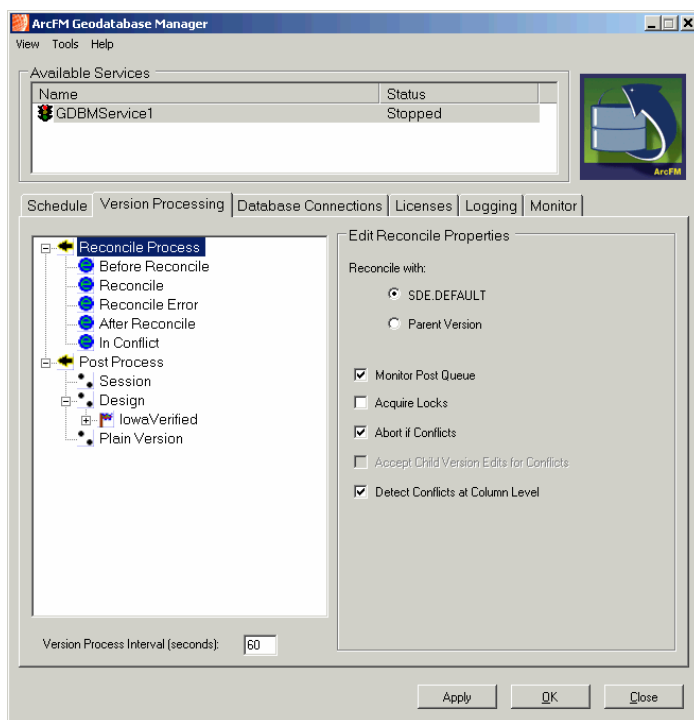


Geodatabase Manager

Automated Reconcile and Posting for Enterprise Geodatabases



Enterprise GIS managers need to keep up with daily demands of posting large numbers of completed versions, keeping geodatabases current so they can drive other important applications, viewers, and interfaces to external systems. Active versions must also be reconciled periodically to maximize the state reduction benefits of geodatabase compression.



Geodatabase Manager automates and schedules the dual tasks of reconciling and posting, with a comprehensive, configurable workflow that enforces QA and other business rules – augmented by a powerful conflict resolution process.

Extends ArcSDE

ESRI's ArcSDE, by design, supports one post to a version at a time. In an enterprise implementation, user productivity is impacted when many users attempt to post to the same version at the same time, or in rapid succession. Geodatabase Manager centrally organizes this process through automated queues, configured with priorities and conflict management rules that free users from potential delays and lets them get on with the next job.

Any versioned, enterprise ArcSDE environment – including landbase and non-utility geodatabases – can benefit from Geodatabase Manager in key areas:

- **Best Possible Performance** through continuous reconcile and compression, even if the system has long-transaction versions.
- **Up-to-date Top Level Versions** by posting large numbers of versions daily, keeping outward-facing "in service" versions current.
- **Improved Data Integrity** by enforcing QA and other business rules, as well as providing an interface point to other critical business systems.
- **Geodatabase Confidence** by logging versions that are reconciled, posted, or are in conflict, in support of reporting, progress measurement, and trend identification in the nature of user edits.
- **Managed Conflict Resolution** by queuing conflicting versions for review by administrators and experienced business systems analysts.

State-of-the-Art Version Management

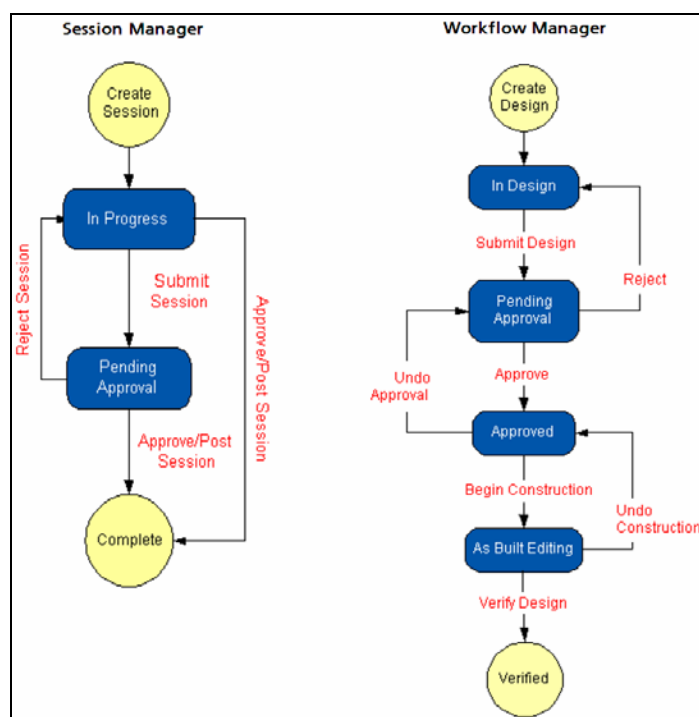
Geodatabase Manager runs directly on top of ArcGIS (no ArcFM required) and comprises one or more Windows services, plus a configurable control application that implements specific behavior depending on business needs:

1. Supports multiple services on multiple servers, each posting and/or reconciling either within a single geodatabase, or across different geodatabase environments.
2. Prioritizes posting, then shifts to reconcile mode when the posting queue is empty.
3. Optimizes version reconciliation order to achieve the greatest compression of the ArcSDE version-state lineage.
4. Schedules multiple daily startup and shutdown times that enable the services to work in concert with other daily and weekend system processes.
5. Defines a conflict resolution workflow for versions that fail to reconcile - occurring when the same GIS features or objects are edited in two or more geodatabase versions - typically for Business Analysts or Power Users to resolve.
6. Performs QA/QC and executes business validation rules on edited GIS features and objects, with a workflow to re-assign and route versions to a user for resolution.
7. Tracks metadata and logs information about each edit and version processed by the service, including attributes like:
 - User
 - Date
 - Time Stamps
 - Others
8. Supports diverse versioning schemes that can differ from one geodatabase to another.
9. Performs geodatabase house-cleaning after successful posting, removing objects related to the version - i.e. ArcFM and/or Designer persisted stored displays, map books, graphics, etc.

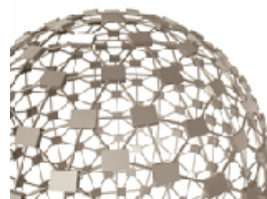
Along with this powerful, out-of-the-box functionality, Geodatabase Manager also provides a customization framework that enables developers to further extend its capabilities.

Integrates with ArcFM and External Workflows

If you do have ArcFM, Geodatabase Manager differentiates between standard, ArcFM Edit and Design versions existing in a particular state, honoring next-state transitioning as directed by the ArcFM Solution's Session and Workflow Manager applications and/or a Work Management system.



With built-in extendability, Geodatabase Manager easily integrates with other applications or databases, including Work Management, Outage Management, and Customer Information. The GIS posting of newly constructed or modified facilities, which is a significant event in the lifecycle of Work Orders, becomes an event in these systems.



Smart Grid Solution